



Features and Benefits

MIIM Software is the central data manager for the MIIM system. It manages OSI Layer 1 infrastructure elements and provides instantaneous information to the IT Manager about connectivity on MIIM enabled channels. The software documents planned work orders and detects unplanned changes to the network. It allows continuous monitoring of the complete physical channel from work area outlet to the active network device. MIIM software automatically monitors connections and disconnections, identifies and confirms port availability and notifies the IT Manager of all unscheduled or unauthorized network cabling changes. All moves, adds, and changes (MACs) detected on the network are automatically updated in the database. MIIM software is a web based application that enables global network access by an unlimited number of users and provides cost effective and accurate network management.

The discovery module includes periodic global discovery of devices on all MIIM enabled channels, on-demand discovery of all devices attached to a particular switch, and Event-Driven Discovery. MIIM's unique Event-Driven Discovery is initiated when a device is added to a complete channel. After the device is detected, MIIM determines the IP Address, MAC address and MachineName of the device and associates this information to the data channel.

MIIM's SNMP module provides the ability to forward MIIM messages to any SNMP receiver. Multiple SNMP clients may be configured individually to receive a subset of MIIM messages or all messages.

MIIM Reports allow the IT team to extract information contained in the MIIM system about the Layer 1 infrastructure and the assets connected to the infrastructure. Reports include information about assets, work orders, logs, MACs, and connectivity status of MIIM enabled channels.

- Hierarchal view of entire enterprise layer 1 infrastructure
- Monitoring of all connections/disconnections
- Drag and drop work orders
- Work orders for end devices and wire closet patches
- Guided patching
- Search feature to easily locate assets and information
- Event logs for audit trails
- Assets linkage to building maps
- Enhanced graphics and mapping features
- Tracing feature across all channel elements
- Unrestricted number of users per license
- Data import and export capability
- Event-Driven Discovery
- SNMP messaging

Technical Information

MIIM Software is designed for Windows 32 bit and 64 bit environments and requires a TCP/IP network. The following system requirements are recommended:

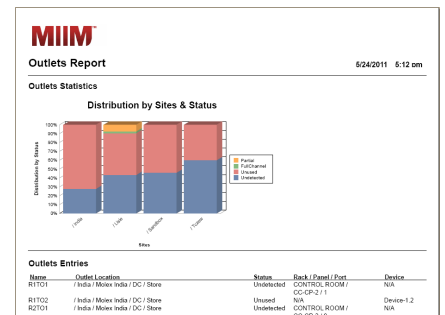
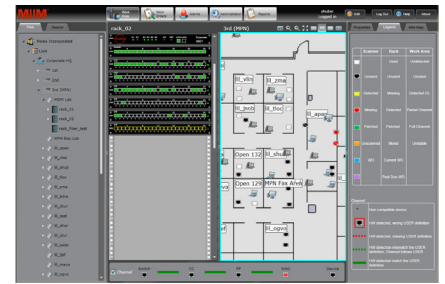
Server*: Supported Operating Systems:
 Windows Server 2008 (US English version)
 Windows Server 2008 R2 (US English version)
 Server should meet Microsoft's recommended requirements

Database*: Microsoft SQL Server Express 2008
 Microsoft SQL Server Express 2008 R2

Browser Support: Microsoft Internet Explorer Version 7.0 or higher
 Firefox Version 3.2 or higher
 Chrome Version 5.0 or higher
 Recommended screen resolution of 1200 x 800 or better

- Microsoft Silverlight is required on the web browsing device.
- One year technical support provided with initial software purchase (can be renewed on an annual basis).
- MIIM Server Application Software Maintenance Program available separately

* Molex recommends Windows Server 2008 R2 and SQL Server Express 2008 R2.



ORDERING INFORMATION

Order No.	SAP No.	Description
IMA-00102	183250004	MIIM Server Application Software
IMM-00102	183250005	MIIM Server Application Software Maintenance

MOLEX PREMISE NETWORKS

Americas
 Tel: 630 969 4550
 www.molexpn.com

EMEA
 Tel: 44 (0) 2392 205800
 www.molexpn.co.uk

APAC
 Tel: 61 3 9971 7111
 www.molexpn.com.au